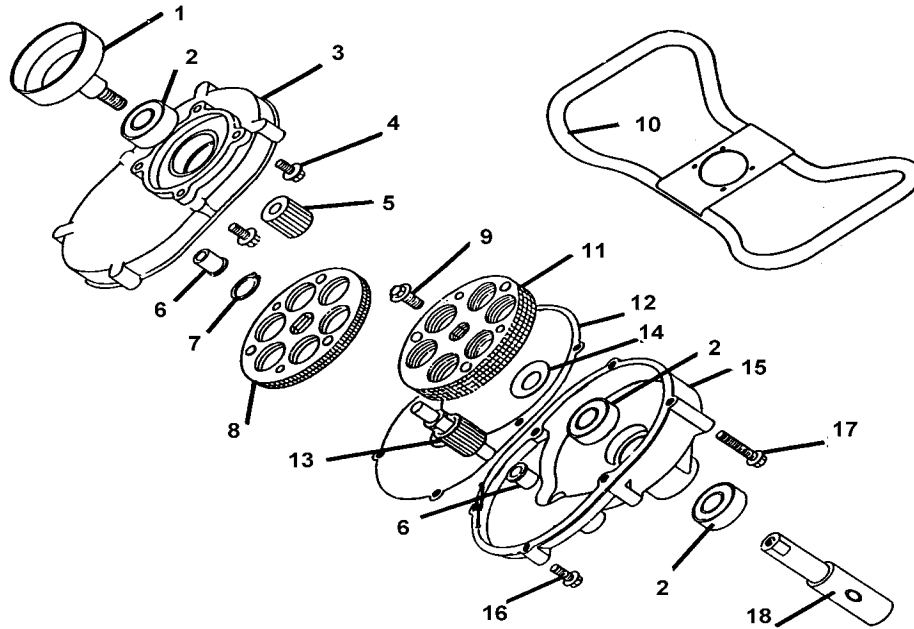


## 2 HP WITH BALL BEARING OUTPUT WITH TC 300 30XX & 31XX MOTORS



Qty	P/N	Description	Qty	P/N	Description
1	151398	Clutch Drum	12	NLA	Gasket Not Required
2	122205	Ball Bearing	13	122315	Pinion
3	151375	Upper Gear case	14	113950	Belleville Washer
4	470833	Bolt	15	151354	Gear case
5	122320	Pinion Gear	16	410018	Screw
6	122210	Bearing	17	410010	Screw
7	151392	Snap Ring	18	113950	Shaft
8	113305	Gear 60T (2 Needed)	<b>Not Shown</b>	151477	Throttle Cable w/Lever <b>TC 300-31XX</b>
9	490007	Bolt	<b>Not Shown</b>	151385	Throttle Cable w/o Lever <b>TC 300-30XX</b>
10	151362	Handle Assy	<b>Not Shown</b>	151642	Throttle Lever
11	113305	Gear 60T (4 Needed)	<b>Not Shown</b>	151406	Clutch Assy