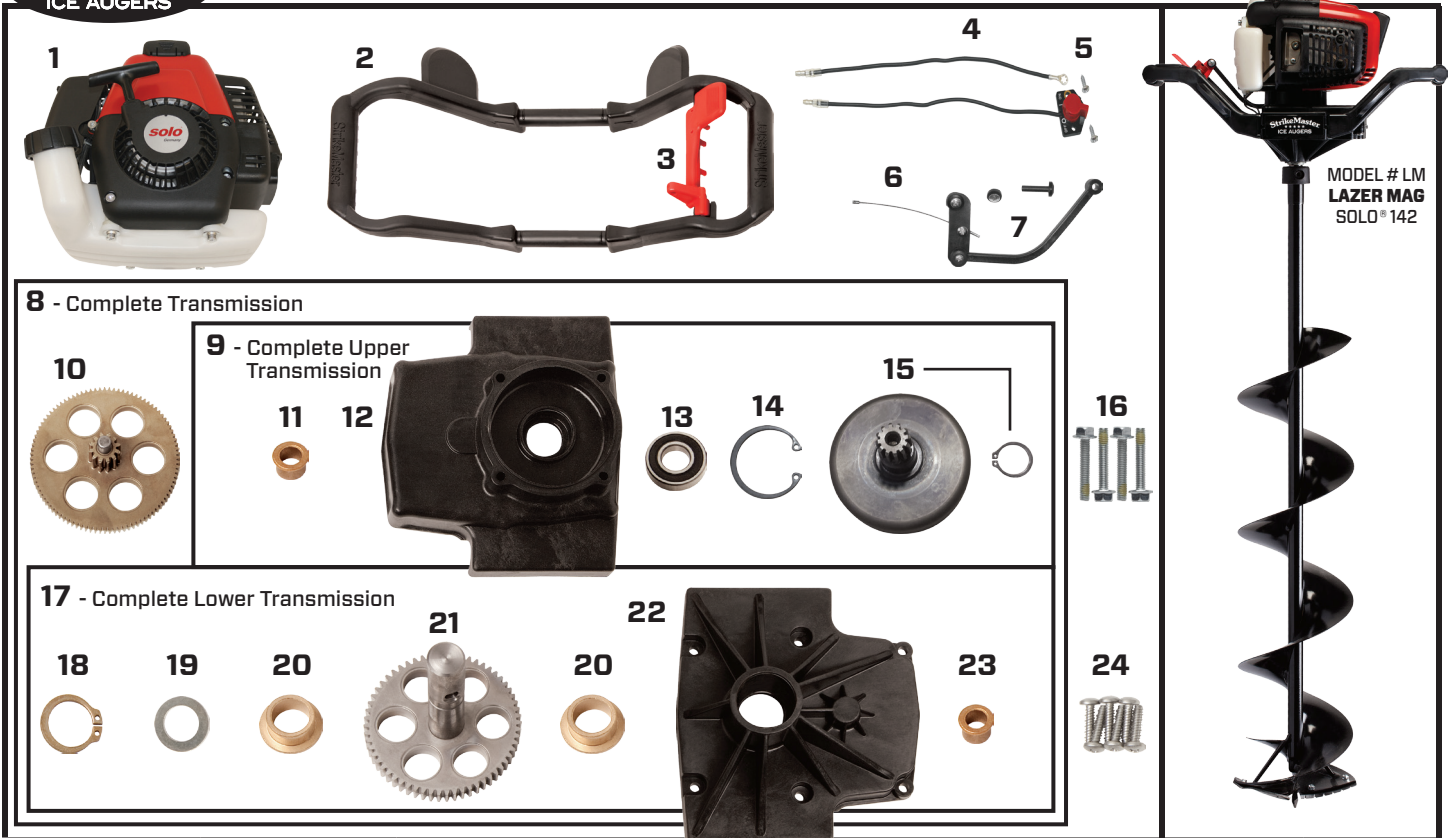




# LM - LAZER MAG SOLO® 142 2014 - Current Model Parts List



MODEL # LM  
LAZER MAG  
SOLO® 142

Item Number	Part Number	Description	Quantity
1	151623	Solo 142 Engine	1
2	151364C	Composite Handle with Lever	1
3	151645	Throttle Lever with Screw	1
4	151401	Stop Switch Assembly	1
5	410090B	Stop Switch Screw	2
6	151505	Throttle Linkage Cable	1
7	151510	Throttle Linkage	1
8	140 S	Complete Transmission (Includes #9-Upper, #17-Lower & #10-Gear)	1
9	140 S-U	Complete Upper Transmission (Includes #11, 12, 13, 14 & 15)	1
10	211310	40:1 Compound Gear	1
11	122210	Flange Bushing Compound (Upper)	1
12	140210	Transmission Case (Upper - must order #8 or 9)	1
13	122205	Clutch Cup Bearing	1
14	211930	Bearing Internal Snap Ring	1
15	122410	Clutch Cup Drum with Gear & Snap Ring	1
16	470840	Upper Transmission Bolt - 6mm x 1 x 40mm	4
17	140 S-L	Complete Lower Transmission (Includes #18, 19, 20, 21, 22 & 23)	1
18	122920	Snap Ring Output Shaft	1
19	122915	Output Shaft Washer	1
20	122215	Flange Bushing Output Shaft	2
21	122305	Output Shaft with Drive Gear	1
22	122120	Transmission Case (Lower - must order #8 or 17)	1
23	122210	Flange Bushing Compound (Lower)	1
24	410011S	Lower Trans Screws HI-Low Cut Phillips	6

If your auger is still under warranty, please contact StrikeMaster Customer Service at [service@normarkcanada.com](mailto:service@normarkcanada.com). Please be advised, work performed outside of an authorized service center will void your StrikeMaster warranty. To purchase the parts listed, please contact one of our Canadian master service centers. SM10/14

Solo® Germany The registered Solo® trademark is licensed for use in the U.S. to the German company Solo Kleinmotoren GmbH by the U.S. affiliate, Solo incorporated.