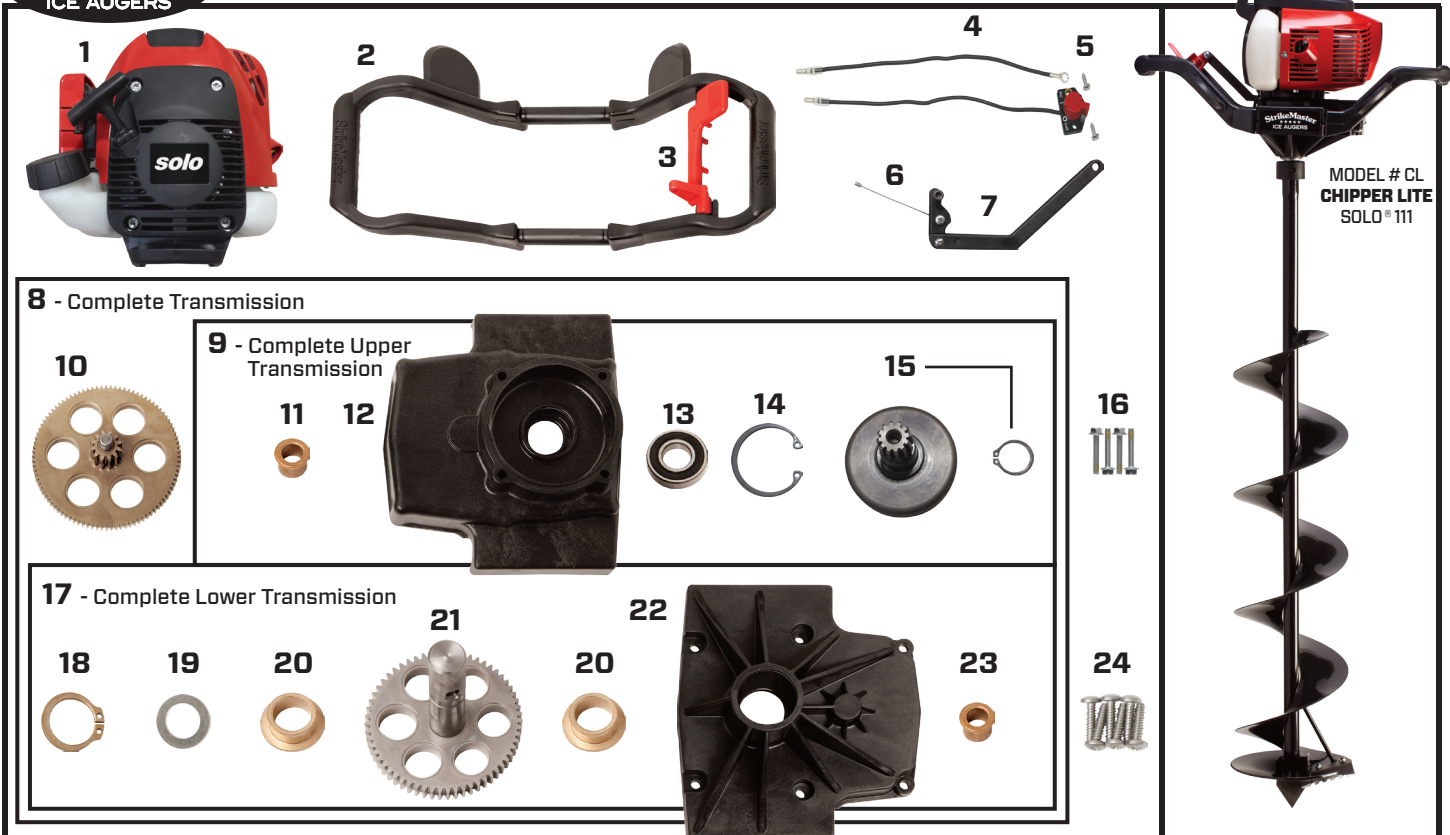




CL-CHIPPER LITE SOLO® 111 2014 - Current Model Parts List



Item Number	Part Number	Description	Quantity
1	161619	Solo 111 Engine	1
2	151364C	Composite Handle with Lever	1
3	151645	Throttle Lever with Screw	1
4	151401	Stop Switch Assembly	1
5	410090B	Stop Switch Screw	2
6	151512	Throttle Linkage Cable	1
7	151512-A	Throttle Linkage (Includes #6)	1
8	140 S	Complete Transmission (Includes #9-Upper, #17-Lower & #10-Gear)	1
9	140 S-UCL	Complete Upper Transmission (Includes #11, 12, 13, 14 & 15)	1
10	211310	40:1 Compound Gear	1
11	122210	Flange Bushing Compound (Upper)	1
12	140210	Transmission Case (Upper - must order #8 or 9)	1
13	122205	Clutch Cup Bearing	1
14	211930	Bearing Internal Snap Ring	1
15	122415	Clutch Cup Drum with Gear & Snap Ring	1
16	410485	Upper Transmission Bolt - 5mm x 40mm	4
17	140 S-L	Complete Lower Transmission (Includes #18, 19, 20, 21, 22 & 23)	1
18	122920	Snap Ring Output Shaft	1
19	122915	Output Shaft Washer	1
20	122215	Flange Bushing Output Shaft	2
21	122305	Output Shaft with Drive Gear	1
22	122120	Transmission Case (Lower - must order #8 or 17)	1
23	122210	Flange Bushing Compound (Lower)	1
24	410011S	Lower Trans Screws HI-Low Cut Phillips	6

If your auger is still under warranty, please contact StrikeMaster Customer Service at service@normarkcanada.com. Please be advised, work performed outside of an authorized service center will void your StrikeMaster warranty. To purchase the parts listed, please contact one of our Canadian master service centers. **SM10/14**

Solo® Germany The registered Solo® trademark is licensed for use in the U.S. to the German company Solo Kleinmotoren GmbH by the U.S. affiliate, Solo incorporated.